

UD3 / 4 Sphere

The Reckmann UD Sphere is a below deck mounted hydraulic furling gear. The UD unit is fixed in the deck, no chainplate is needed. The special Reckmann sphere technology is maintenance free. The hydraulic real time adjuster is equipped with an electronic position indicator. Like all Reckmann hydraulic furlers, the UD has an emergency manual drive to be operated safely on deck level with a standard winch handle .

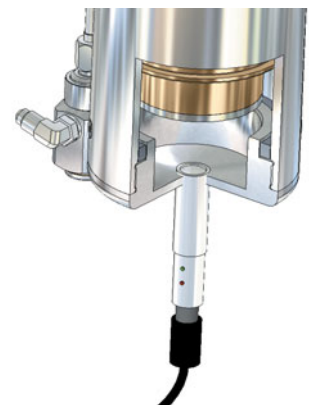
Also available: UD5s and UD6.5s



deck attachment



manual backup drive



electronic position position indicator

technical data

	UD3s	UD4s
forestay	up to rod -60	up to rod -91
foils	S3 - S4.5	S4.5 - S5.5
turning moment	402 Nm	900 Nm
holding moment	1400 Nm	2500 Nm
max. adjuster pull	12t @ 250 bar	24t @ 350 bar
adjuster stroke	100 mm	150 mm